

# CONTENTS

<b>1.</b>	<b>SAFETY .....</b>	<b>3</b>
<b>2.</b>	<b>INTRODUCTION .....</b>	<b>3</b>
<b>3.</b>	<b>FEATURES.....</b>	<b>4</b>
<b>4.</b>	<b>REMOTE CONTROL .....</b>	<b>5</b>
<b>5.</b>	<b>FRONT PANEL .....</b>	<b>7</b>
<b>6.</b>	<b>REAR PANEL .....</b>	<b>7</b>
<b>7.</b>	<b>CONNECTING YOUR SYSTEM .....</b>	<b>7</b>
<b>8.</b>	<b>BASIC OPERATIONS .....</b>	<b>9</b>
8.1	TURN ON STB.....	9
8.2	POWER.....	9
8.3	CHANNEL UP/CHANNEL DOWN .....	9
8.4	VOLUME UP/VOLUME DOWN-.....	9
8.5	NUMBER .....	9
8.6	MUTE .....	9
8.7	PAUSE.....	9
8.8	RECALL .....	9
8.9	FAVORITE.....	9
8.10	AUDIO .....	10
8.11	INFORMATION .....	10
8.12	EPG.....	10
8.13	TV/RADIO.....	11
8.14	CHANNEL LIST .....	11
8.15	SLEEP .....	12
8.16	PAGE UP/PAGE DOWN .....	12
8.17	TEXT .....	12
8.18	SUBTITLE .....	12
8.19	FIND.....	12
8.20	ZOOM.....	13
8.21	TV/SAT.....	13
8.22	MENU.....	13
8.23	VIDEO FORMAT.....	13
8.24	EXIT .....	13
<b>9.</b>	<b>SERVICE .....</b>	<b>13</b>
9.1	ORGANIZING SERVICE .....	13
9.2	ORGANIZING FAVOURITES.....	15
<b>10.</b>	<b>INSTALLATION .....</b>	<b>17</b>
10.1	SATELLITE INSTALLATION .....	17
10.2	FASTSCAN SATELLITE .....	19
10.3	AUTO INSTALLATION .....	19
10.4	SATELLITE GUIDE .....	20
<b>11.</b>	<b>PREFERENCE.....</b>	<b>20</b>
11.1	LANGUAGE .....	20
11.2	PARENTAL CONTROL .....	21
11.3	TIME SETTING .....	22
11.4	TIMER .....	22
11.5	A/V CONTROL .....	23
11.6	MISCELLANEOUS SETTINGS .....	24
11.7	OSD SETTING .....	24
<b>12.</b>	<b>SYSTEM .....</b>	<b>25</b>
12.1	INFORMATION .....	25

12.2	DEFAULT SETTING .....	26
1.	Default Value: .....	26
1.	Delete All Channels: .....	26
1.	Save default value .....	26
12.3	SOFTWARE UPGRADE.....	27
12.4	UPGRADE BY USB.....	27
12.5	BACKUP TO USB.....	28
<b>13.</b>	<b>CONDITIONAL ACCESS .....</b>	<b>28</b>
13.1	CA SETTING.....	28
<b>14.</b>	<b>USB.....</b>	<b>28</b>
14.1	FILE LIST .....	28
14.1.1	Record Files.....	29
14.1.2	MP3 Files.....	29
14.1.3	Image Files.....	31
14.1.4	Software .....	33
14.1.5	All.....	33
14.2	STORAGE INFORMATION .....	33
14.3	PVR SETTING .....	33
14.4	USB SPEED TEST .....	34
14.5	REMOVE USB DEVICE SAFELY! .....	34
<b>15.</b>	<b>INTERNET .....</b>	<b>34</b>
15.1	NETWORK LOCAL SETTING.....	34
15.2	HTTP UPGRADE.....	35
15.3	FTP UPGRADE .....	35
15.4	FTP.....	36
15.5	WEATHER FORECAST.....	36
15.6	RSS READER .....	36
15.7	YOUTUBE.....	37
15.8	GOOGLE MAPS .....	38
<b>16.</b>	<b>GAME .....</b>	<b>38</b>
16.1	TETRIS .....	38
16.2	SNAKE.....	38
16.3	OTHELLO .....	38
<b>17.</b>	<b>NEW FEATURES .....</b>	<b>39</b>
17.1	EQUALIZER .....	39
17.2	TIME SHIFT .....	39
17.3	RECORD .....	39
<b>18.</b>	<b>TROUBLE SHOOTING.....</b>	<b>41</b>
<b>19.</b>	<b>SPECIFICATIONS.....</b>	<b>42</b>



Manufactured under license from Dolby Laboratories.

Dolby and the double-D symbol are trademarks of Dolby Laboratories.

---

## 1. SAFETY

This HD Receiver has been manufactured to satisfy the international safety standards. Please read the following safety precautions carefully.

**MAINS SUPPLY:** 100 - 240V AC 50/60Hz

**OVERLOADING:** Do not overload wall outlet, extension cord or adapter as this may result in fire or electric shock.

**LIQUIDS:** Keep liquids away from the HD Receiver. The apparatus shall not be exposed to dripping or splashing and that no objects filled with liquids, such as vases, shall be placed on the apparatus.

**CLEANING:** Disconnect the HD Receiver from the wall outlet before cleaning .Use a light damp cloth (no solvents) to dust the HD Receiver.

**VENTILATION:** The slots on top of the HD Receiver must be left uncovered to allow proper airflow to the unit. Do not stand the HD Receiver on soft furnishings or carpets. Do not expose the HD Receiver to direct sunlight or do not place it near a heater. Do not stack electronic equipments on top of the HD Receiver.

**ATTACHMENTS:** Do not use any attachments that are not recommended as these may cause hazard or damage the HD Receiver.

**CONNECTION TO THE SATELLITE DISH LNB:** Disconnect the HD Receiver from the mains before connecting or disconnecting the cable from the satellite dish.

FAILURE TO DO SO CAN DAMAGE THE LNB.

**CONNECTION TO THE TV:** Disconnect the HD Receiver from the mains before connecting or disconnecting the cable from the satellite dish.  
FAILURE TO DO SO CAN DAMAGE THE TV.

**EARTHING:** The LNB cable MUST BE EARTHED to the system earth for the satellite dish.

**LOCATION:** Place the HD Receiver indoor in order not to expose to lightening, rain or sunlight.

## 2. INTRODUCTION

Thank you for purchasing the HD Receiver.

This HD Receiver is fully compliant with the international DVB standard and thus transmits digital images, sounds, information guides and teletext directly to your TV through the satellite broadcasting. Now you can comfortably see and receive digitally transmitted music, news, movie and sports satellite broadcasts in your office or at your home. You can enjoy interesting games embedded in HD Receiver.

In service search section, both the automatic service search method and the manual search mode are provided. Also it supports DiSEqC 1.0, 1.2 and USALS, enabling you to move your antenna in order to focus preferred satellite. You can save up to 6000 TV and Radio services and work around with the favorite, Lock, Delete, Move and Sort functions.

The menu is very modern and supports multiple languages. All functions can be carried out using the remote control and some of the functions can also be carried out using the front panel. The HD Receiver is easy to use and adaptable for future advances. Please be aware that new software may change the functions of the HD Receiver.

---

If you have any difficulties concerning the operation of your HD Receiver, please refer to the relevant section of this manual, including the 'Troubleshooting'. This Manual will provide you with useful information on using the HD Receiver.

### **3. FEATURES**

- MPEG-Fully DVB-S / DVB-S2 (H.264) HD compliant
- 6000 channels (TV and Radio) programmable
- Multilingual menu text support
- Channel switching time less than 1 second
- Channel list editing
- Favorite channel list editing
- True-color On-Screen Display (OSD)
- Full Picture In Graphic (PIG) function
- Electronic Program Guide (EPG) for on screen channel information
- Subtitle supported
- Teletext supported by VBI insertion and software emulation
- Parental lock facility by channel and program event
- Program and Channel information transfer from receiver to receiver
- Exciting games embedded
- S/PDIF for digital audio or Dolby Digital Bit-Stream output
- DiSEqC 1.0, 1.1, 1.2 and USALS
- HDMI FullHD (1080p) Video/Audio Output
- USB 2.0 Host
- 4 Digit LED Display for service information
- RTC (Real-Time-Clock)
- Time Shift
- Video Recording
- Recording one channel and Time Shifting another channel (optional)

## 4. Remote Control



You can power on/off the receiver, operate on screen menu, and use a variety of hot key function.

### **POWER**

To switch your receiver on from standby or standby to on.

### **MUTE**

Used to enable or disable the audio

### **NUMERIC KEYS**

Used to select channels or enter programming parameters

### **TV / RADIO**

Receiver switches between TV and Radio mode.

### **(ZOOM)**

Press  key select zoom times, from X1 to X16.

### **RECALL**

Return to the previous menu or status.

### **TV/SAT**

Receiver switches between TV and receive mode.

### **INFO**

To display channel status or various program information of current service.

### **EPG(Electronic Program Guide)**

Display the Programs guide on screen when available.

### **MENU**

Displays the Main Menu on the screen, or return to the previous menu or status.

### **EXIT**

Cancel the user selection and return to the viewing mode from a menu.

### **OK**

To select menu option, or to updated on entry.

### **<,> KEY**

To adjust volume level, or to move cursor left or right in the menu.

### **^,v KEY**

To change channels, or to move cursor up or down in the menu.

### **PAGE+/PAGE-**

To move up the cursor to the next or previous page in the menu or channel list.

### **●REC**

Has different functions per menu.

### **Teletext**

Shows teletext information of the current channel supports.

### **Subtitle**

Subtitle Display.

### **F1**

Receiver Video Output switches between HDMI and RGB mode.

### **(FIND)**

Use to prompt find channels sort by character.

### **TIMER**

Press timer key you can setup up the Standby time.

### **V. FORMAT**

Press V.FORMAT button to switch the display mode among "AUTO", "480i", "480p", "576i", "576P", "720P\_50", "720P\_60", "1080i\_50", "1080i\_60", "1080P\_50" and "1080P\_60"

### **FAV(FAVORITE)**

To set receiver to the favorite server mode, display the favorite channel.

### **FOLDER**

Press this button to enter the Record Manager menu directly.

### **AUDIO(Red Key)**

Audio channels setup, to select audio mode; Left, Right, Stereo, Mono.

### **OPTION(GREEN KEY)**

Shows NVOD information of the current channel supports.

### **SAT**

Display the satellite list at normal picture.

### **Play Mode**

---

Select the play mode in MP3 or JPEG player.

 **USB**

To remove the USB Hard Disk safely.

**TMS(Time Shift)**

Press this button to display Time Shift info bar.

 **Play**

To play the MP3, JPEG, or Record files.

 **Stop**

To stop the Time Shift, recording, or MP3/JPEG player.

 **PAUSE**

Used to select the freeze function.

Press once to freeze the screen picture.

 **FB**

To start Fast Backward function.

 **FF**

To start Fast Forward function.

 **SB**

To start Slow Backward function.

 **SF**

To start Slow Forward function

 /  **PREV/NEXT**

Switch to preview or next file in play mode

## 5. Front panel

**POWER KEY:** To switch the receiver power on/stand by

**MENU KEY:** To enter into the main menu.

**<,> KEY:** To adjust volume level, or to move cursor left or right in the menu.

**^, v KEY :** To change channels, or to move cursor up or down in the menu

**Remote Sensor:** Detects infrared signal from remote control unit

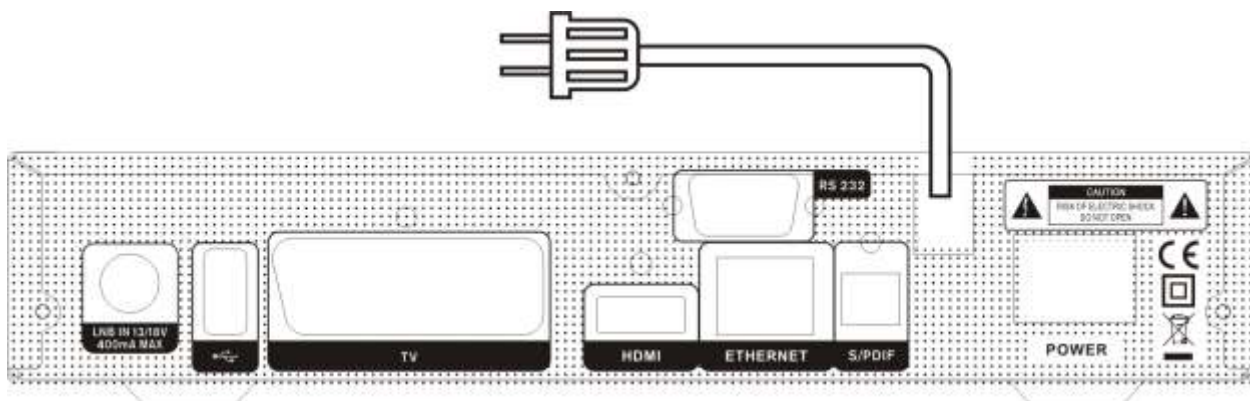
**POWER Indicator:** while the receiver is power on and at standby mode.

**Signal Indicator:** When receiving signal is strong, the signal indicator is lighted.

**Card Slot:** One CA Interface for Conax,

**Display:** (LED type) Indicates operating status of receiver

## 6. Rear Panel



Please refer to the diagram above for all possible connections of your receiver

Do not connect the unit to the mains socket until all other connections have been made and checked.

Your configuration can vary depending on model

**POWER ON/OFF SWITCH:** To switch ON/OFF the receiver power supply.

**LNB-IN:** This port is to connect the coaxial cable from LNB of your Dish.

**TV :** This is used to connect your TV through SCART cable.

**S/PDIF:** Digital Audio interface, connect to AV amplifier S/PDIF input terminal.

**HDMI:** Audio and Video output socket for TV set with HDMI Input Jack only.

**USB:** USB 2.0 Host, connect to USB hard disk, flash disk or USB wifi dongle.

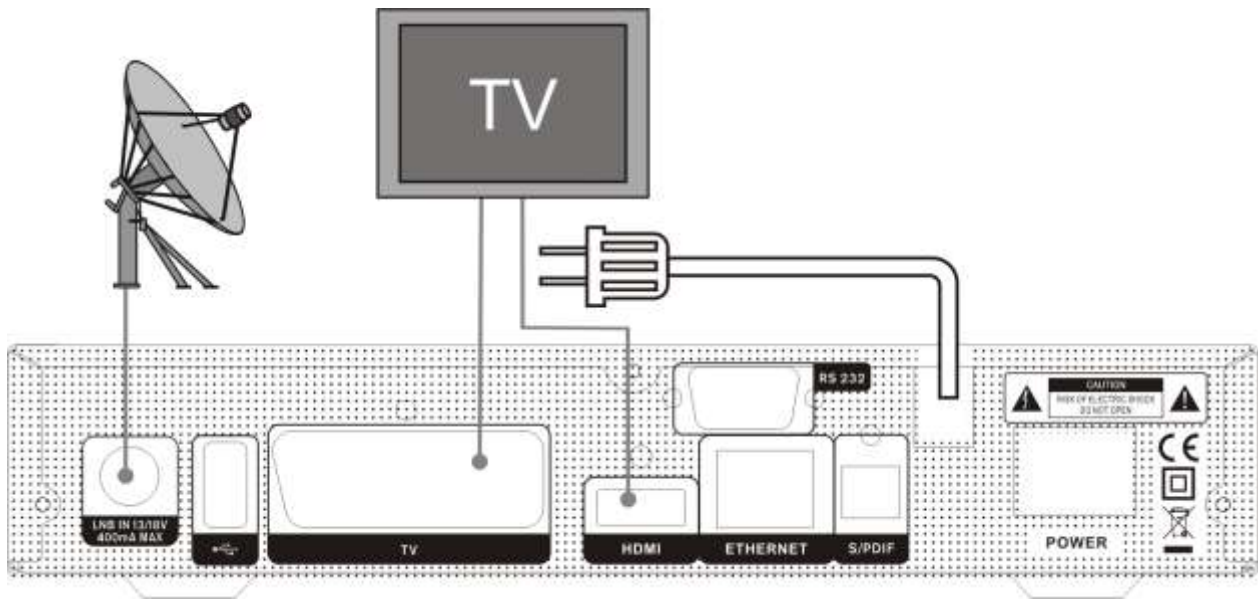
**RS 232C SERIAL PORT:** This is used to connect your receiver to a computer through a serial cable.

**ETHERNET:** This is used for internet connection.

## 7. Connecting Your System

There are two ways to connect the receiver to your existing TV system. We recommend using one of the following cases for the best result:

1. If you have a high definition television set, you should use a HDMI cable for best result, Plug one end of the cable into the HDMI socket on the receiver, and the other end into the matching socket on your television. In this case, you do not have to make audio connections because the HDMI connector can output stereo audio or Dolby Digital audio.
2. Connect one end of SCART cable to the TV (SCART) jack on the back of the receiver and the other end to a SCART jack on your TV.



Finally connect the coaxial cable from the LNB of your Dish to the LNB IN jack on the receiver.

### 7.1 TV with Motorized System (DiSEqC 1.2)

Connect one end of your coaxial cable to the LNB IN connector on the receiver and the other end to the REC or Receiver connector on the DiSEqC 1.2 motor.

Connect the coaxial cable from the LNB to the LNB connector on the DiSEqC 1.2 motor.

All our receivers are designed to be DiSEqC 1.0 and DiSEqC 1.2 compatible.

This allows multiple antennas to be connected to the receiver at the same time.

If you have two or more fixed antennas or LNBs, then we recommend you use a DiSEqC 1.0 switch.

Connect the coaxial cable from the first LNB to the LNB 1 or LNB A input connector of the DiSEqC switch.

Do the same for any other LNBs that you have.

Connect one end of a coaxial cable to the RF output connector of the DiSEqC switch, connect the other end to the LNB IN socket on the receiver.

To the digital receiver, you can connect either a single satellite antenna directly or LNB of multi-feed equipment.

---

## 8. Basic Operations

### 8.1 Turn on STB

First, press the [Device's Main Power] to turn on the unit.

When the STB is first used, there will play the first channel from the default Channel List. If the STB is not first used, STB will play the same channel as last time before turning off.

### ? Frequently Asked Question

**Q: The power of my STB has been turned on and not in Standby mode, but the TV screen showed nothing:**

A: Make sure the TV set has been set to the correct video input (not the TV channels). For example, if you have connected the unit with the Video1 input of the TV set, the TV set has to be switched to Video1.

**Q: The power of my STB has been turn on and not in Standby mode, but the TV screen showed nothing except one box with “No Signal” image.**

A: That means the channel, which you select, is no signal. It could be several causes:

- 1 The channel which you select is not in your allocate satellite. The simply solution is to change channel.
- 2 The signal of current TV channel is too weak. You can try to change channel to other strong signal channels. If the problems still exist, please consult your local dealer or other professionals for technical service.
- 3 You use the Dual LNB, and you need Modify LNB Type

### 8.2 Power

- 1 Press [Power] Key can enter the Standby state
- 2 In Standby state, press [Power] Key again can call back the unit and go on play the previous channel
- 3 User can also disconnect the device's main power to end the Standby state.

### 8.3 Channel Up/Channel Down

In full screen, press [CH+/CH-] to change channel.

### 8.4 Volume Up/Volume Down-

In full screen, press [VOL+/VOL-] to adjust volume.

### 8.5 Number

In full screen, use number key and press [OK] on the Remote Control Unit to change channel.

### 8.6 Mute

- 1 Press [MUTE] key to mute the sound and the screen will show up mute OSD.
- 2 Press [MUTE] key again to restore sound.

### 8.7 Pause

- 1 In playing mode, press [Pause] key, the picture will be paused, but the sound of the channel will still continues.
- 2 Press [PLAY] key again, the screen's picture will skip over to the current playing picture, and the sound of the channel will corresponding playing.

### 8.8 Recall

Press [RETURN] key will directly switch to the previous channel that you played before current channel.

### 8.9 Favorite

- 1 In full screen, press [FAV] key, it will display a window of “Favorite list” on the left of the screen, which you can watch like below.



- 2 In the window of "Favorite list", you can move highlight by press [Channel Up/Channel Down] key to select favorite Channels.
- 3 In the window of "Favorite list", you can press [Left/Right] key to select favorite groups Pressing [P-/P+] keys can implement the "Page up/Page down" function

Press [Exit] key to exit the current window.

## ? Frequently Asked Question

**Q: Why the screen displays "No Favorite Channel", after pressing [Favorite] key?**

**A:** It is because that you haven't set any channels as "favorite channel". Please refer to Favorite

## 8.10 Audio

- 1 In full screen, press [AUDIO] key can open the "Audio" window on the screen.



- 2 You can modify the audio track by press [Channel Up / Channel Down] key and modify the audio mode by press [left/right] key.
- 3 Mode: Left/Right/Stereo/Mono

## 8.11 Information

In full screen, press [INFO] key (press [INFO] key and [RED] key) can open information screen, in the window shows the parameters of current channel.



## 8.12 EPG

- 1 The STB has an Electronic Program Guide (EPG) to help you navigate channels through all the possible viewing options. The EPG supplies information such as channel listings and starting and ending times for all available channels.

Press [EPG] key to display EPG screen.



- 2 Press [Red] key can select the channels by different group, such as by Favorite/Satellite/Provider/CAS etc.
- 3 Press [Green] key to select different display mode among Now EPG, Next EPG, More and Schedule, like the following picture:



- 4 Press [Yellow] key in EPG menu can set one record timer or go to Timer List menu.



- 5 In EPG menu, when you select one event by high light item, you can set this event to record timer list directly by press [REC] button.
- 6 In EPG menu, press [Exit] to close EPG screen.

## 8.13 TV/RADIO

In TV mode, pressing [TV/RADIO] key can switch to Radio mode. In Radio mode, press [TV/RADIO] key to switch to TV mode.

## 8.14 Channel List

- 1 In full screen, press [OK] key can enter "Channel List".



- 2 Press [Red] key to change the different group. which you can watch like below.



- 3 Press [Green] key to display details information for EPG Now.



- 4 Press [Yellow] key you can change the current channel's property, such as FAV/ Lock/ Skip/ Delete/ Rename.



- 5 Press [Blue] key can open the "Sort" window like below. There are five kinds of sorting ways. You can press [Up/ Down] key to move highlight and press [OK] key to confirm you selection.



- 6 The five kinds of sorting way are:
  - ✧ Default: Sorting by scanning result.
  - ✧ FTA/\$: Sort channel through free and scramble sequence. Free channel will in the front of channel list and scramble channel will at the rear of channel list
  - ✧ Lock: Accumulated all locked channels and list in the last of TV Channel List.
  - ✧ Name (A-Z): Sorting in Alphabetical Order, ignore "\$" symbol.
  - ✧ Name (Z-A): Sorting in Alphabetical Order, ignore "\$" Symbol.
- 7 Press [Up/Down] key to move highlight and press [OK] key to play the highlighted channel.
- 8 Press [Page Up/Down] key to page up and page Down.

- 9 Press [Exit] key to exit the channel list.

## 8.15 Sleep

- 1 This function can set sleep timer. When you set a sleep timer and the time arrive, the system will enter to standby automatically.
- 2 Pressing [SLEEP] key, it will switch the mode between Sleep Timer Off /10/30/60/90/120 minutes.

## 8.16 Page Up/Page Down

In Channel list, press [Page+]/[Page-] key can page up and page down the channel list.

## 8.17 TEXT

- 1 Press [TTX] key in full screen, you can open teletext page on the channel which has teletext information.
- 2 If the channel has no teletext information, it will show "No Teletext Data" on the screen.

## 8.18 Subtitle

- 1 Press [Subtitle] key in full screen, you can switch subtitle on or off.

## 8.19 Find



- 1 Press[Find] key in full screen can open the "Find" window like above. You can press[Up/Down/left/right]]key to move highlight and press[OK]key to input the selected symbol or letter into the dialogue.

- 2 After input each character, the program list on the left will search the channel according your input, and list the matched channel.
- 3 Move highlight to “OK” and press [OK] key can close “Find” window and you can select channel from the channels list directly.

## 8.20 Zoom

- 1 The [ZOOM] key allows you to magnify a certain area on the images
- 2 Press [ZOOM] key again, the image will enlarge rotate as x1, x2, x4, x6, x8, x12, x16.
- 3 In “x2 ~ x16” image, using [Up/ Down/ Up/ Down] keys to move the image center area you want to see.
- 4 In zoom mode, press [Exit] to close “Zoom” window.

## 8.21 TV/SAT

- 1 Press [TV/SAT] key can switch between TV mode and STB mode

## 8.22 Menu

- ✧ Press [MENU] key can open the menu, exit the current menu to last menu or close the window.

## 8.23 Video Format

- 1 Press [V.FORMAT] key under Full Screen playback for 1st, it will show the current system outputting video resolution, continuously press this key, system will switch its outputting video resolution by sequence “Auto->480i-> 480P-> 576i->576p->720P-50>720P-60>1080i-50>1080i-60>1080p-50>1080p-60”.



## 8.24 Exit

- 1 Press [EXIT] key can exit the current menu to last menu or close the window.

# 9. Service

When you press [Menu] key to enter menu, there will display the picture like below:



- ✧ Press [Up/Down] key you can select the submenu of Organizing services and Organizing favourites.
- ✧ Press [OK] key to enter the “Organizing Service”. If Menu Lock is “On”, it will display an dialogue for user to key in password. The default Password is “0000”.
- ✧ Press [Menu] key to go back to main menu.

## 9.1 Organizing Service

When you enter to “Organizing Service” menu, there will display the screen like below.



1. You can move highlight by press [Channel Up/Channel Down] key and [OK] key to select the programs which you want to edit.
2. You can press [Page Up/Page Down] key to implement the Page Up/Page Down function.
3. You can use [Red] key to switch different Group.
4. You can press [Green] key to select the programs by different select mode.
5. Press color key can implement the corresponding function in "Organizing Services".

## Groups



- 1 Press [Red] key can open the "Groups" window like above
- 2 You can press [Up/Down] key to move highlight and press [OK] key to select group.
- 3 Press [Menu] key to close "Groups" List.

## Options



1. Press [Green] key can open the "Options" window like above.
2. You can press [Up/Down] key to move highlight and press [OK] key to confirm the select mode.
3. Press [Menu] key to close "Options" List.

## Move

1. Select the channels which you want to edit in channel list by press [OK] key or other select mode.
2. Then press [Right] key to move the high light to right toolbar.
3. Select Move icon by press [Channel Up/Channel Down] key and [OK] key.
4. Move the channels to the position which you want and press [OK] key to confirm. Like the following picture:



## Lock

- 1 Select the channels which you want to edit in channel list by press [OK] key or other select mode.

2 Then press [Right] key to move the high light to right toolbar.

3 Select Lock icon by press [Channel Up/Channel Down] key and [OK] key.

4 Lock the channel by press [OK] key.

Like the following picture:



### Delete

- Select the channels which you want to edit in channel list by press [OK] key or other select mode.
- Then press [Right] key to move the high light to right toolbar.
- Select Delete icon by press [Channel Up/Channel Down] key and [OK] key.
- Delete the channel by press [OK] key.

### Skip and rename

Follow the same way you can set the channel's Skip or give the new name for high light channel.



### Find



- Press[Find] key can open the “Find” window like above. You can press[Up/Down/left/right]key to move highlight and press [OK] key to input the selected symbol or letter into the dialogue.
- After input each character, the program list on the left will search the channel according your input, and list the matched channel.
- Move highlight to “OK” and press [OK] key can close “Find” window and you can select channel from the channels list directly.

## 9.2 Organizing Favourites

This menu is helpful in adding and deleting services to and from the favorite group.



### 1 FAV List

To choose the FAV List by press “FAV” button.

### 2 Add

To add services into favorites, Mark the desired services by press “OK” button in Service List, press ► to choose Add mode and press “OK” button.

---

### 3 Remove

To remove services from favorites, Mark the desired services by press “**OK**” button in Favorite List, press ◀ to choose Remove mode and press “**OK**” button.

### 4 Move

You can reorder and move the service to the preferred position in Favorite List.

### 5 Rename

Select the desired FAV List by press “**FAV**” button, using ◀, ▶ buttons to choose Rename mode and press “**OK**” button to display keyboard, and rename it.

### 6 Group, Options and Find functions

Please refer to the “Organizing Services” part in this manual.

## 10. Installation



- 1 Press [Left/Right] key to select menu pages among Service, Installation, Preference, System, Conditional Access, Internet,USB and Game.
- 2 Press [OK] key to enter the “Installation”. If Menu Lock is “On”, it will display an dialogue for user to key in password. The default Password is “0000”.
- 3 Press [Up/ Down] key to select menu items. Press [menu] key to go back to main menu.

## 10.1 Satellite Installation

## Satellite

- 1 Satellite: Press[OK]key to enter the Satellite list.



- 2 Press [Up/ Down] key to select satellite.  
Press [Page] key to page up or page down.

### LNB Type

In this item, press[Volume Up/ Volume Down]key can switch among “Standard”, “User” and “Universal” ,”Unicable” mode.



## DiSEqC

DiSeqC: You can use[Volume Up/  
Volume Down]key to switch options.  
There are several options for your  
selection:

- a) Disable: without DiSeqC.
- b) 1/2, 2/2: two ports DiSeqC
- c) 1/4, 2/4, 3/4, 4/4: 4 ports DiSeqC
- d) 1/8, 2/8... 8/8: 8 ports DiSeqC
- e) 1/16, 2/16....16/16: 16 ports DiSeqC



## Positioner

**Positioner:** In “Positioner” item, you can press [Volume Up/ Volume Down]key to switch “Off / DiSEqC 1.2 / USALS” functions.

## 22K

You can use [Volume Up/ Volume Down] key to switch “ON / Off”. When this item is switched to “ON”, receiver will receive TV and radio input signal from 22K port. If the item is switched to “Off”, the receiver will receive all signal from 0K port.

## ! Notice

When you choose LNB type  
“Universal”, you can not modify 22K.

## 0/12V

You can use[Left/ Right]key to switch “on /off”.

## Polarity

In “Polarity” item, [Volume Up/ Volume Down]key to switch “Auto / H / V” functions.

## Toneburst

In “Toneburst” item, you can press [Volume Up/ Volume Down]key to switch “Off/On” functions.

## LNB Power

In “LNB POWER” item, you can press [Volume Up/ Volume Down] key to switch “Off/On” functions.

## TP Edit

When you enter to “TP Edit” menu, there will display the screen like below:



- 1 In “Satellite” item, press[Volume Up/ Volume Down]key to switch satellite that you want to scan or press[OK]key to enter satellite list for selection.

- 2 In “TP Index” item, you not only can use [Volume Up/ Volume Down]key to select transponder but also can use[Add] and [Delete]functions.

- ✧ When you press[Green] key, it will display “New TP” in “TP Index” item; You should set the parameters of “TP Frequency” and “Symbol Rate” for this new transponder. The parameters of “TP Frequency” and “Symbol Rate” can set by number keys. The available range are “3000~13450 MHz” and “1000~45000Ks/s”.
  - ✧ When you press[Yellow] key, there will show up a warning message for reminding whether you will delete the current transponder or not. If you select “Yes”, the current transponder will be deleted, and the total account of transponder will reduce 1 correspondingly.
  - ✧ When you press [Blue] key, there will show up a warning message for reminding whether you will delete all transponders or not. If you select “OK”, all transponders will be deleted.
- 3 For the existed transponder, you also can use number keys to modify the parameters of “TP Frequency” and “Symbol Rate”.
  - 4 When you complete your modification, Press [Red] key, it will show up a dialog to ask you scan mode, program type, scan type and NIT Search on/off. After you set up, press [OK] key to start scanning.
  - 5 In the “TP Scan” item, press [Exit] key to exit the scanning and save the current parameters.

## Single Scan

- 1 Press [Red] key, it will show up a dialog to ask you scan mode (means you want to scan all channels or only scan free channels), program type (means you want to scan all channels or only scan TV/Radio channels), scan type (means preset scan, that is searching the existed TP. Automatic Scan means blind scan. It is no need existed TP info) and NIT Search on/off. After you set up, press [OK] key to start scanning.
- 2 Press [White] key into the blind scanning immediately.

## TP Scan

Press [Green] key to scan current TP's programs.

## Auto DiSEqC

Press [Blue] key to run Auto DiSEqC function, it can find the satellite connect to which port automatically.

## Blind Scan

Press [White] key can directly into blind scan mode to scan the current satellite.

## Select satellites

When you Press [SAT] key, you will see the screen like below:



1. You can press [ok] button to select one or more satellites and then press [red] button, it will

show a dialog asking scan mode, program type, scan type and NIT Search on/off. After you set up, press [OK] key to start scanning.

2. Press [green] button to edit the name and longitude of the select satellite.
3. Press [yellow] button to add a new satellite.
4. Press [blue] button to delete one or more satellites that you have selected.
5. Press [white] button to move the satellite selected (*note: you can only move one satellite*).

## 10.2 FastScan Satellite

In this menu, you can perform a fastscan by selecting the provider and press OK button on Start Search item.



## 10.3 Auto installation



“Auto Installation” is a very new and convenient function. It will automatically detect all dishes connecting to this machine and scan the available services belonging to the satellite matched according to satellites and transponders data in current database. You don't have to input any parameter of your antenna settings. Just press “OK” button to enter this “Auto Installation” menu then it starts

scanning and shows you the result at the end of scanning.

## 10.4 Satellite Guide

When you enter to “Satellite Guide” menu, you will see the screen like below:



“Satellite Guide” is use for user to enter local longitude; local latitude and satellite longitude. By the evaluation from the receiver evaluate the antenna azimuth and antenna elevation; user can follow this guidance to adjust antenna.

- 1 You can use number keys to input parameters in “Local Longitude”, “Local Latitude” and “Satellite Longitude”.
- 2 You can use [Left/Right] key to select east or west in “Local Longitude” and “Satellite Longitude”, select north and south in “Local Latitude”.
- 3 Moving highlight to “Start” item and press [OK] key. The lower column on the screen will calculate the corresponding value automatically.
- 4 Orientation means the angle between south and satellite.

Press [Exit] key to draw back to “Main” Menu.

## 11. Preference

When you enter to “Preference” menu, you will see the screen like below:



In “Preference” menu:

- Press[Channel Up/Channel Down]key to select menu items among Language, Parental Lock, Time setting, Timer, A/V Control, Miscellaneous Setting, OSD Setting.
- Press[OK]key to enter the selected item.

### 11.1 Language

When you enter to “Language” menu, you will see the screen like below:



- 1 Menu Language: press [left/right] key to select menu languages, the selections of languages include: English, Russian, German, Greek, French, Italian, Spanish, Portuguese, Arabic, Polish etc.
- 2 First Audio: Some channels have more than one audio language for choosing; by this

function you can set the first audio for this channel. If the playing channel has the same audio as the “First Audio” you set, system will play this audio language as default. If the channel hasn’t the suited audio language, then the system will compare automatically with second audio language. The selections of audio languages include: English, French, German, Russian, Arabic, Portuguese, Turkish, Spanish, Polish and Italian.

- 3 Second Audio: If the channel has no correspond audio with “First Audio” but have corresponded audio with “Second Audio”, system will play the second audio language as default. If no audio language corresponds with the “Second Audio”, then the default language of current channel will be played automatically. The selections of audio languages include: English, French, German, Russian, Arabic, Portuguese, Turkish, Spanish, Polish and Italian.
- 4 Audio Priority: Press [Volume Up/ Volume Down] key to select Dolby or Language.
- 5 EPG: Press [left/right] key to select EPG language.
- 6 Subtitle Language: Press [left/right] key can select subtitle language.
- 7 Teletext: You can set teletext language. If the streams have this language you can see the teletext in language you set.
- 8 Press [MENU] key to draw back from “Language” menu.

## 11.2 Parental Control

You can set a password for anyone who wishes to operate in the “Installation” menu. And you can also set the password for the lock channels. (How to set the lock channel please refer to [LOCK](#)) Here will show you how to setting and how to revising the password.

- 1 In “Parental Lock” function, press [OK] key, there will pop an dialogue for you to input the password. When you input

the correct password, you will see a screen like below:



- 2 Menu Lock determining that when user wish to enter “Installation” menu, whether have to input Password or not. If the setting of “Menu Lock” is “On” which means user have to key in password, set “Off” means unlock.
- 3 Channel Lock determining that when user wish to play the lock channels, whether have to input the password or not. If the setting is “On”, play the channels with lock mark will show up a dialogue on the screen and ask for the password. If the setting of “Channel Lock ”is “Off”, the Lock function will invalid.
- 4 New Password is used for revising password; you can input the new password in this item by using number keys directly. After you filled in 4 digital numbers, the highlight will auto skip to Confirm Password and ask you to input the new password again. If the password is correct, the screen will show up a message of “Saving Data, Please Wait...”. After finish saving and draw back to “System Setup” menu, the revising is complete.

Press [MENU] key to draw back from the “Parental Lock” menu.

### 11.3 Time Setting

When you enter to “Local Time Setting” menu, you will see the screen like below:



- ✧ GMT Usage: This item is use for open the usage of GMT. You can press [Volume Up / Volume Down] keys to switch “On/Off”.
- ✧ The “GMT Offset” item is valid only when the setting of “GMT Usage” is “Yes”. You can press [Volume Up / Volume Down] keys to switch “GMT Offset” value, and the range is “-12:00 ~ +12:00”, increase each half hour progressively.
- ✧ You can press [Left/Right] to control Summer time on or off.
- ✧ “Date” and “Time” items are valid only when the setting of “GMT Usage” is “No”. You can press [Volume Up / Volume Down] keys to moving highlight and use number keys to input directly.
- ✧ Time Display can control time display on or off when full screen play  
*If the current channel provides the correct time information, you will see the current time while you enter “Time” menu. If the channel doesn’t provide time information, you have to input the date and time information manually.*

✧ Press [MENU] key to draw back from “Time Setting” Menu.

### 11.4 Timer

Press [ok] key to open timer menu.

- ✧ Current time information will display on the first column; if the current time is incorrect, please modify the time information in “Time” item.
- ✧ Timer Number: You can press [Volume Up / Volume Down] keys to set Timer number, and there are 8 timers in total.
- ✧ Timer Mode: There are several modes for Timer to setting, include Off, Once, Daily, Weekly, Monthly and Yearly.
- ✧ Timer Service: There are two options for “Timer Service”, include “TV Channel” and “Radio Channel” (timer setting for channel change and Wakeup/Sleep) and “Record Radio” and “Record TV” (Timer setting for Record the TV or Radio program to USB Hard Disk) and Message (reminding message).
- ✧ When you select “Channel” (timer setting for channel change and Wakeup/Sleep) option in “Timer Service”, the screen will display like below:



- i. Channel: press [OK] key to enter channel list and select channel that you want to setting.
- ii. Date: use number keys to input your wakeup date.
- iii. On Time: use number keys to input your wakeup time. Once the time's up, no matter what the system is in standby mode or in playing mode, the system will automatically switch to the channel you want and start to play.
- iv. Duration: After you set a time for "Duration" item, once the time's up, the system will automatically switch to standby mode. If you want not work this function, set the duration is 00:00.

✧ When you select "Message" (reminding message) option in "Timer Service", the screen will display like below:

- v. Wakeup Message: press [Volume Up / Volume Down] key to select reminding message as Birthday, Anniversary and General.
- vi. Date, you can use number key to input your wakeup date.
- vii. On Time: use number keys to input your wakeup time. Once the time's up, no matter what the system is in standby mode or in playing mode, the system will automatically pop a reminding message.
- viii. The message will always display on the screen, you can press [Exit] key to close it.
- ix. Standby After Finish: You can press [Left/Right] to control the system is in

standby mode or in playing mode after the record stopped.

- x. Extend Record Time : Press [left/right] button or input the number using numeric keys to set the Extend Record Time. It is used to add time at beginning and end of the record time.
- xi. Press [MENU] key to exit the current menu.

## 11.5 A/V Control

When you enter "TV System" menu, you will see the screen like below:



- 1 Display Mode is for switching the system output video resolution. Highlight this option and press left or right key, it will switch video resolution circularly by the sequence "Auto<-> by native TV<-> 480i<-> 480P<-> 576i<-> 576p<-> 720P<->1080i-50<->1080i-60<->1080P-50<->1080p-60".
- 2 This effect is equal to press V.Format Key under Full Screen and their last setting saving will be efficient for each other. By Source means system will set the video output resolution according to the current program it's playing, different resolution programs switching perhaps will make TV screen flicker. By Native TV means system will be according to the HDMI TV's max supported resolution to set its resolution, if system is not connected to a HDMI TV, it will set resolution to default.
- 3 Aspect Mode is for switching the screen aspect ratio mode. Now we provide following

options: 4:3 PS / 4:3 LB / 16:9/Auto. You can press [Left/Right] key to select each mode circularly. 16:9 will provide user pillar box mode, it means user use 16:9 TV to display but need to see a 4:3 full display picture. System will force press wide screen picture to be narrow and there are black bands on left and right side. Auto means system won't do any aspect ration translation, 16:9 picture source will be good display on a 16:9 TV but will be too narrow on a 4:3 TV, and 4:3 picture source will be too wide in a 16:9 TV but will be good display in a 4:3 TV.

- 4 Video Output: Press [Left/Right] to select HDMI or RGB.
- 5 Digital Audio Out is for setting both SPDIF and HDMI's digital audio output mode, it has options LPCM Out, Auto, You can press [Left/Right] Key to select each mode circularly. LPCM Out means system will decode no matter AC3 or PCM audio track data to be LPCM, digital audio decoder or HDMI TV will get LPCM digital audio data. Auto means system will detect which the connected HDMI TV can decode and then output that data. If HDMI TV can decode AC3, system just output RAW data, if HDMI TV can decode LPCM only, system will just decode AC3 or LPCM to be LPCM and then output.
- 6 Service Switch Mode: Press [left/right] button to select **unblank** or **blank**.
- 7 Press [MENU] key to draw back from "AV System" menu.

## 11.6 Miscellaneous Settings

When you enter to "Miscellaneous Settings" menu, you will see a screen like below:



- 3 Channel list num: This item provides below options: 1/2/3, you can press [Left/Right] key to select each mode circularly.
- 4 Subtitle Auto: You can press [Left/Right] key to select "On" or "Off". If the current channel has subtitle information, it will be showed automatically while this function is "ON", if this function is "OFF", you need turn on the subtitle manually by pressing [SUBTITLE] key.
- 5 Auto Power Down: You can press [Left/Right] key to select the time or "Off", if you select time, duration this time if no any operation on receiver, it will go to standby mode.
- 6 Standby mods: if set to "Real", Press power key receiver will be in real standby status, the consumption will less than 0.5 Watt. if it's set to "Fake", Press power key, receiver will be in fake standby status.
- 7 Screen protect: You can press [Left/Right] key to select the time or "Off", if you select time, Radio full-screen playback duration this time if no any operation on receiver, it will go to Screen protect
- 8 Press [MENU] key to draw back from "Miscellaneous Settings" Menu.

## 11.7 OSD Setting

When you enter the "OSD Setting" menu, you will see a screen like below:



- 1 OSD Timeout: When you switch channels in full screen, there will show up some information about current channel on the lower of the screen. And regarding to the duration of these information show up on the screen, you can press [left/right] key to set the time. The range of the duration is “1 second ~ 10seconds”.
- 2 OSD Position: control display position of the info bar in full screen mode. You can choose “bottom” or “top”.
- 3 OSD Transparency: Besides the setting of “OSD Menu Style”, you also can set the transparency of OSD. You can press [left/right] key to select the values. There are 5 levels of transparency, 10%, 20%, 30%, and 40% and “off” (means no transparency function).
- 4 Brightness/Contrast/ Saturation : You can adjust the parameter about the Video image by using the [OK]button or press[left/right] key, the default value is Level 10.
- 5 Load Default OSD Setting : If you are not satisfy with your setting, you can move highlight to this item and press [OK] key to reset parameters as default value.
- 6 Press [MENU] key to draw back from the “OSD Setting” menu.

## 12. System

When you enter “System” menu, you will see a screen like below:



In “System” menu:

- 1 Press [Up/Down] key to select menu pages among Information, Default Setting, Software Upgrade, Upgrade By USB, Backup to USB
- 2 Press [OK] key to enter the selected item.

### 12.1 Information



- When you enter “Information” menu, you will see a screen like above. The screen displays :MODEL ID,SW VERSION,H/W VERSION,LOADER VERSION,LATEST UPDATE,STB SN,STB ID,CHIP ID.
- Press [MENU] key to draw back to “Information” menu.

## 12.2 Default Setting



### 1. Default Value:



When you press [OK] key In the “Default Setting” item:

6. There will display a dialogue box for you to enter the password, the default password is “0000”.
7. After you input the correct password, there will show a warning message asking you “The operation will load default and erase all the channels that user added, continue?”.
8. If you select “YES”, all the revised parameters of the receiver will reset to default value. Please use this function carefully.
9. In step 1 and step 2, press[Exit]key to draw back from this item without saving.

### 2. Delete All Channels:



When you press [OK] key in the “Delete All Channel” item, it will display a dialogue box asking you to confirm to delete all channel. If you select “YES”, all channels will be deleted.

### 3. Save default value



When you press [OK] key in the “Save default value” item, there will show a message to ask you “Do you want to set current database as default data?”. If you select “YES”, it will set the current data as default data.

## 12.3 Software Upgrade



### Upgrade by RS232:



1 We offer this function for user to connect receiver (Master) to the other receiver (Slave) via serial interface.

Connect master receiver to slave receiver via serial interface. Enter "Software Upgrade" menu in master receiver and press [left/right] keys to switch upgrade mode: All SW+bootloader /All SW+Channel list/Software(no channel list)/Channel list.

2 Moving highlight to "Start" on master receiver and press [OK] key to start upgrade.

3 Turn on slave receiver and it needn't operate any setting.

4 Press [MENU] key to draw back.

### Upgrade By Satellite:



This function can upgrade the software through signal lines from the satellite

- 1 Select the satellite and TP or input the TP value and download PID, these parameters you can get from your provider.
- 2 Then move the highlight to the start button and press [OK] button to start upgrade.

## 12.4 Upgrade By USB



In this menu you can upgrade the software from USB conveniently, Press "Left/Right" button select USB; press ' OK ' button to enter.

In this menu you can select the Upgrade Mode among Software(No channel list), Channel list, All SW+bootloader and All SW+Channel list, and you can select the appropriate upgrade file on "Upgrade File" item. After you select the "Upgrade Mode" and "Upgrade File", press ' OK ' button on "Start" item, the receiver can upgrade automatically.

NOTE:

You must put the upgrade file on the /ROOT DIRECTORY of the USB storage.

## 12.5 Backup to USB

In this menu ,you can dump the software to the USB equipment

- 1.In "Backup file",you can press [OK] key to edit the file name.
- 2.In "Backup to USB", you can press [OK] to start backup software .



*Note: All information showed in this menu and submenu are coming from inserted card. In case if anything is wrong, it could be card problem. After inserting the card correctly at any time, a message-box will show on the screen with message about detecting the card, in "card info" menu all available information will be displayed. You can press [left/right] key to set the message display time.*

## 13. Conditional Access

### 13.1 CA Setting



We provide two CA slots for user to use. Receiver has build in smart card module with CONAX system. By using cards in this system provided by operators, it is possible to watch many scrambled channels coded in this system. This menu shows detailed information about cord inserted into cord reader module. It allows inserted according to help messages visible on the bottom of the screen.

## 14. USB

if you enter to the "USB" Menu, you will see the picture like the below:

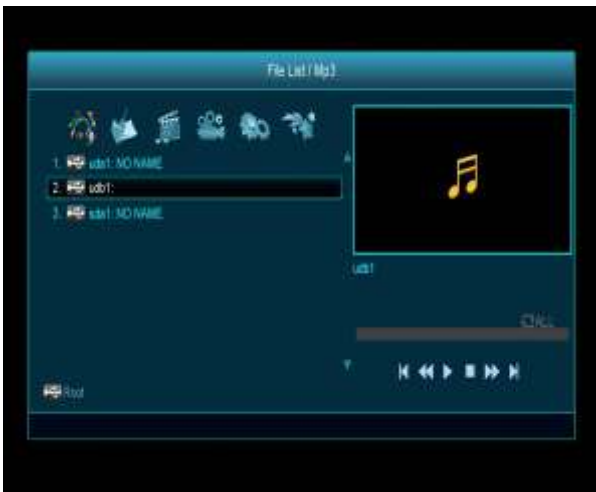
*Note: If no USB Hard Disk insert to the receiver this menu is not available.*



### 14.1 File List

In this menu you can select the file list from USB. Press [ok] button to enter the File list. you can check the files and folders of the


USB storage, and you can play MP3 and JPEG files.



#### 14.1.1 Record Files



In this menu you can playback the record files, and you can press [Red] key to rename the file, or press [Green] key to lock the file, or press [Yellow] key to delete the file.

You can press [1] key to adjust the volume while you preview the record file on top of the right corner .and you can press  to enable or disable the audio.

#### 14.1.2 MP3 Files



In this menu you can select the MP3 file to play by press [OK] key or [PLAY] key. Also you can setting the play list..

[Red] key: Show play list as the picture bellow:



- **Red Key:**

Move the selected file by press Red key and [UP][DOWN] key.

- **Green Key:**

Delete the selected file by press Green key.

- **Yellow Key:**

Delete all the file by Yellow Key, but there is one remind "Delete All" before practical operation, if select Yes, all file will be deleted, and close the Play list window.

- Press OK button to play file.

[Green] key:

All the MP3 files in current directory are added into MP3 play list by press [Green] key, and will display “ ” behind the MP3 files.



**[Yellow] key:**

To edit the files or folders in the USB storage.press this button you can see the picture like the below.



- **Red Key**

To rename the file or folder.

- **Green Key**

To copy the file or folder to other folder.

- **Yellow Key**

To delete the file or folder from the disk.

- **Blue Key**

To create a new folder in the disk.

Press [EXIT] key to draw back to 'EDIT' MENU

**[White] key:**

To setting the Repeat mode of the MP3 player.



After begin to play MP3, it will show the MP3 play window.

Press “PAUSE” button to pause.. Press “PLAY” button to play. Press “STOP” button to stop and time return to 00:00.

Press “PREV” button to jump to the beginning of file list if play is over 3 seconds; or jump to previous file if play less than 3 seconds.

Press “NEXT” button to go to the next file.

Press “FORWARD” button to forward 4S.

Press “BACKWARD” button to back 4S.

Jump to beginning or end if less than 4S to the beginning or end of music file.

Switch to the next file or stop playing by the repeat mode when play is over on the current file.

**[0] key:** To sort the file list by different order.



**[FAV] key:** To add mp3 or jpeg to play list.

### 14.1.3 Image Files



Press 'OK' button on the selected files to play the files.



You can preview the picture at the top right corner if the scroll bar is on the picture files (JPG, BMP), and show the logo when at MP3 file.

Move scroll bar when press up/down key, page up or down by page key.

Go into sub-directory when press ok key in the file directory, play the selected file when scroll bar is on the file, automatic return USB menu after play is over.

**White key:**

In this menu to setting JPEG player.



**[0] Key:**

To sort the file list by press [0] button.

**[Red] Key:**

Show file play list. There will display "The type of playlist do not exist" if there are no any file.

### Image view operation

Please see the below image operation menu if Image function is selected.



- **Red Key:**

Move the selected file by press Red key and [UP][DOWN] key..

- **Green Key:**

Delete the selected file by press Green key.

- **Yellow Key:**

Press Yellow Key, will delete all image files in play list, but system will remind you “Delete All ” before practical operation, if you select Yes, all file will be deleted and Play list window will be closed.

- Press OK button to play file

**[Green] key:**

All the Image files in current directory are added into Image play list by Green key, and will display “♥” behind the Image files, like below.



**[Yellow] key:**

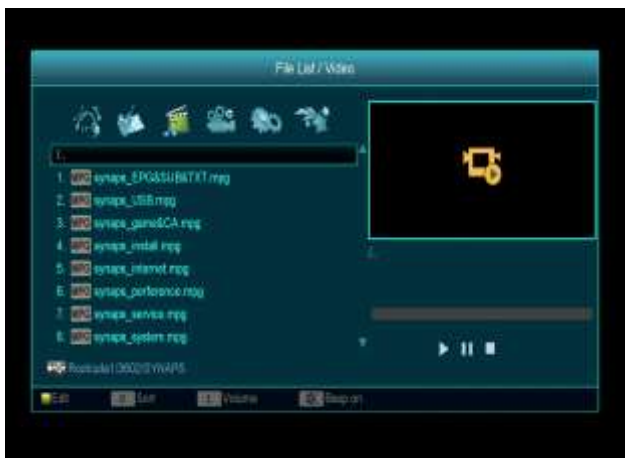
To edit the files or folders in the USB storage . like in MP3 menu. Include rename, copy, delete and create folder function. You can press [Left/Right] key to previous menu.

**[Blue] key**

To preview the images. press this key you can see the picture like below.



#### 14.1.4Video



You can see the video files in this menu, it can support .mpeg and .ts format file.and press [play] key, you can preview the video at the top right corner.

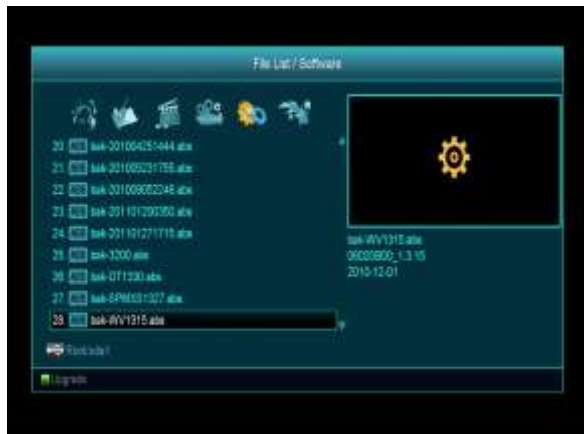
You can press [1] key to adjust the volume while you preview the video file,press [0]key to sort the file list. and press [X] to enable or disable the audio

- **Yellow key**

To edit the files or folders. Include rename, copy, delete and create folder function.

You can press [Left/Right] key to previous menu.

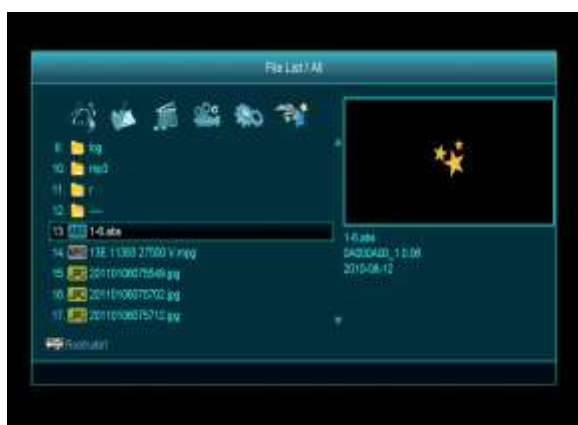
#### 14.1.4. Software



If has software in current directory, you can press [Green] key to upgrade like below.



#### 14.1.5 All



You can preview all files in this menu.

### 14.2 Storage Information

Press "OK" button to enter the HDD Information menu like the below picture, in

this menu you can see the details information about the HDD.



If you want to format the HDD, press "yellow" button to enter Format menu, then select the File System between the "FAT" and the "NTFS", Press "OK" Button to confirm.

*Note: If you format the HDD, all the files include MP3, JPEG and the record files will be deleted from the HDD.*

If you want change the path for recording files and timeshift files, press "blue" button to enter the DVR Set menu, then press OK button to set the path on current select disc.

### 14.3 PVR Setting



#### 1 Time Shift:

**ON:** Enable the Time Shift function.

**OFF:** Disable the Time Shift function.

#### 2 Timeshift to Record

**ON:** Means when you press the " ● " Button to record the program, it will merging the Timeshift files and the record files.

**OFF:** Means when you record the program, it just start when you press " ● " button, not include the Timeshift files.

### 3 Record Type

You can select the record type by press [left/right] key.

### 4 Jump Time

You can select the jump time by press [left/right] key.

### 5 Default Record Time

You can input number key in the item to set the default record time.

## 14.4 USB Speed Test



In "USB Speed Test" Menu you can see the Standard speed and your USB harddisk speed, according this information you can know what operation your disk can support.

## 14.5 Remove USB Device safely!

Use this menu you can remove the USB Device safely.



## 15. Internet

If you enter to the " Internet " Menu, you will see the picture like the below:



You can get a new software from the network via LAN port or USB Wi-Fi connection.

### 15.1 Network Local Setting

1. Select your Network Type as Wired or Wireless, if you select Wireless, can configuring Wi-Fi (wireless) as the following step:

- a. Select Wireless on Default Network Type item.



- b. Press [red] button the wireless LAN network list will appear, Select you Wi-Fi network and press [ok] button, at last input password.

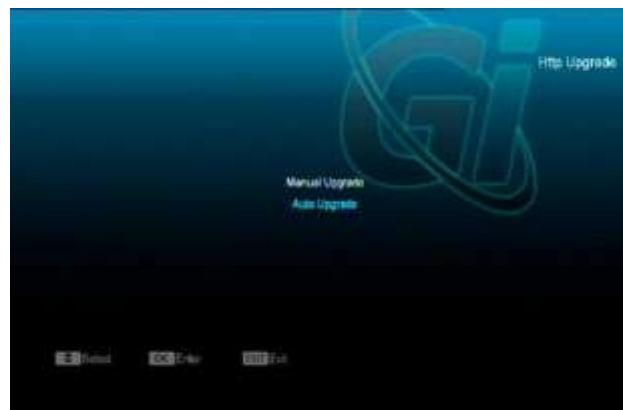


- □

- c. Press [OK] button on Connect item to start connecting.
2. In this menu you may assign a dynamic IP address to the digital receiver. To do so, select the DHCP On.
  3. If you have a static IP address, unselect the DHCP Enable, then the IP Address, Subnet Mask, Gateway and DNS options

become enabled. You have to set these options according to your IP address.

## 15.2 Http Upgrade



1. When connected to the Internet, receiver can manually or automatically make software update from file from server.

### Note:

This function depends on connection with external server. In case of no software on server, this function will not work.

## 15.3 FTP Upgrade



When connected to the Internet, receiver can make software update from file from FTP server.

### Note:

This function depends on connection with external server. In case of no software on server, this function will not work.

## 15.4 FTP

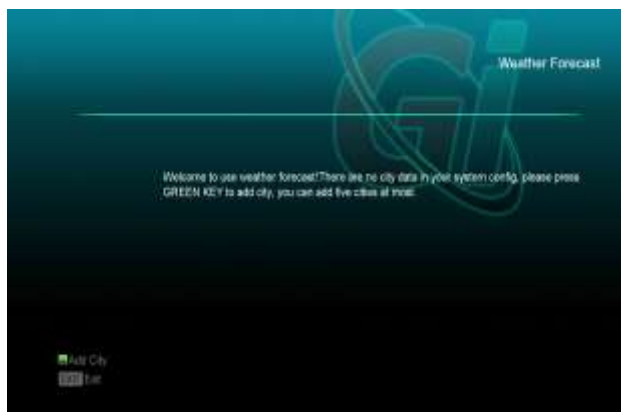


When connected to the Internet, receiver can download some files, such as software, MP3 or Image files from FTP server.

### Note:

This function depends on connection with external server. In case of no any files on server, this function will not work.

## 15.5 Weather Forecast



In this menu you can see the weather forecast, press [Green] key to add city.



- **Red key**

To update the weather forecast to the newest.

- **Green key**

To add new city. use this menu. you can add 5 cities at most.

- **Yellow key**

To delete current city.

- **Blue key**

To switch other temperature mode.

## 15.6 RSS Reader



In this menu you can see the news

- **Red key**

To update the news to the newest.

- **Green key**

To add new channels, you can input a new website. use this menu. you can add 10 channels at most.



- **Yellow key**  
To delete current channel.
- **Blue key**  
To edit current channel information. you can edit channel name and channel URL.

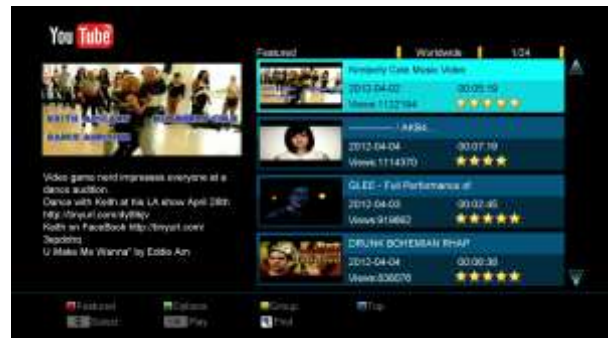


Press ok button to see the detail information. like the below.



## 15.7 Youtube

This menu is some internet applications. "youtube" can play stream media from "www.youtube.com". When you enter this menu, you will see a screen like below:



1. Press [up/down] key to move highlight.
2. Press [OK] key on one item, it will play pertinent video. The video will show on top left corner. Press [OK] again, it only shows video in the centre of your screen. Now press [zoom] key, the video will play in full screen.
3. Press [vol+ / vol-] to control volume.
4. Press [pause] key to pause video, or press [stop] key to stop play.
5. Press [red] key to display the featured video.
6. Press [green] key to sort by site and duration. The site has Germany, worldwide, Poland and so on. Duration has all time, this week, this month and so on.
7. Press [yellow] key to switch group. These are game, news, tech, move and so on.
8. Press [blue] key to display the top video. These are top favourites, top rated, most views, most recent and so on.
9. Press FIND [F] key in full screen to open the "Find" window. You can press [←, →, ↑, ↓] keys to move highlight and press [ENTER] key to input the letters.

## 15.8 Google Maps

Inside the menu can browse Google Maps



## 16. Game



When you enter “Game” menu, you will see three Games include Tetris, Snake and Othello.

**Basic operation statement:**

### 16.1 Tetris

- Moving highlight to “Setup” and press [left/right] key to select the game level (speed).
- Moving highlight to “Start” and press [OK] key to start the game.
- Moving highlight to [Cancel]keys and press [OK]key to draw back from the game.
- Start on the game:

- [left/right] Move shape left or right
- “Channel Up” Rotate clockwise

- “Channel Down” Faster drop
- [OK] Pause/Play the game
- [Exit] Quit game and draw back to “Game” menu.

### 16.2 Snake

- Moving highlight to “Setup” and press [left/right] key to select the game level (speed).
- Moving highlight to “Start” and press [OK] key to start the game.
- Moving highlight to[Cancel]keys and press [OK]key to draw back from the game.
- Start on the game:
  - [[left/right/ UP/ Down] use these arrow keys to guide the snake.
  - [OK] Pause/Play game
  - [Exit] Quit game and draw back to “Game” menu.

### 16.3 Othello

- Moving highlight to “Setup” and press [left/right] keys to select the game level (degree of difficulty).
- Moving highlight to “Start” and press [OK] key to start the game.
- Moving highlight to [Cancel] keys and press [OK] key to draw back from the game.
- Start on the game:
  - [[left/right/ UP/ Down] use these arrow keys to guide chessman.
  - [OK] set chessman.

- [Exit] Quit game and draw back to "Game" menu.

## 17. New Features

### 17.1 Equalizer

When you listen the Radio program, it will display the music spectrum graphic on TV Screen.



### 17.2 Time Shift

If you connect the USB HDD, and enable the Time Shift function in the menu "Main Menu/ Record/ PVR Setting/Time Shift", It will start the Time Shift function automatically after you switch the program, and when you press the "**Tms**" button the Time Shift info bar will displayed as the following picture:



- 1 You can press " || " button to pause the video, and can save the picture to

flash by press " P+ " button when the video is paused.

- 2 You can press " ⏮ " or " ⏭ " button to Fast Backward or Fast Forward.
- 3 You can press " ⏪ " or " ⏩ " button to Slow Backward or Slow Forward.
- 4 Press "left" or "right" button to jump to different position, then press "OK" button to confirm.
- 5 Press "■" button to exit the playback.

### 17.3 Record

If you connect the USB HDD.

You can press " ● " button to start record function, as following picture:



- ✧ Press " ► " button to display the record info bar when you recording.
- ✧ Press " ● " button again to setting the record time.



- 
- ✧ You can press " || " button to pause the video, and can save the picture to flash by press " P+ " button when the video is paused.
  - ✧ You can press " ⏮ " or " ⏭ " button to Fast Backward or Fast Forward.
  - ✧ You can press " ⏪ " or " ⏩ " button to Slow Backward or Slow Forward.
  - ✧ Press "left" or "right" button to jump to different position, then press "OK" button to confirm.
  - ✧ Press "■" button to stop the recording.

---

## 18. Trouble Shooting

If you suspect there is a fault with your receiver, please check the following trouble shooting guide before calling authorized service agent.

Warning! Under no circumstances attempt to repair the receiver yourself. Tampering with the receiver may result in fatal electric shock and will invalidate your warranty.

Symptom	Possible cause
Settings you made in the menu have not change	The receiver lost power before being able to enter into standby mode Some of the Settings saved by user can be deleted partly or fully
No signal	The level of signal is weak LNB is out of order The cable from the LNB or Terrestrial is incorrectly Connected (short circuit or open circuit) The position of dish is aligned incorrectly
Receiver is on but no picture or sound except the following messages (NO TV program)	Channel is not available Channel is scramble
Receiver not responding to remote control unit	RCU batteries are dead or inserted incorrectly The RCU is pointing toward wrong direction
Poor picture Quality	The level of Signal strength is low
No sound	The cable is connected incorrectly The Volume level is low Muting function is active
No display on the LED Display Panel	The power cord is not plugged in correctly.
No picture on the screen	Receiver is in Standby mode RCA Jack or cable is not connected firmly to the video output port of television Incorrect channel or video output is selected on television Brightness level of your TV set is incorrectly defined

## 19. Specifications

SYSTEM RESOURCES	
<b>Main Processor</b>	
<b>Flash Memory</b>	
<b>DDR SDRAM</b>	
Tuner/Front-end(Optional)	
<b>Tuner Type</b>	DVB-S / DVB-S2
<b>Input Connector</b>	F-type, Connector, Female
<b>Loop Through</b>	F-type, Connector, Female
<b>Signal Level</b>	-65 to -25 dBm
<b>LNB Power &amp; Polarization</b>	Vertical: +13V
	Horizontal: +18V
	Current: Max. 500mA
	Overload Protection
<b>22KHz Tone</b>	Frequency: 22±1KHz
<b>DiSEqC Control</b>	Amplitude: 0.6±0.2V
	Version 1.0, 1.1 1.2, USALS Available
<b>Demodulation</b>	QPSK, 8PSK
<b>Input Symbol Rate</b>	2-45 Mbps, Convolution Code Rate
	1/2, 2/3, 3/4, 5/6, 7/8 and Auto
POWER SUPPLY	
<b>Input Voltage</b>	Free Voltage (100~240V AC, 50/60Hz)
<b>Power Consumption</b>	30W MAX
MPEG TS A/V Decoding	
<b>Transport Stream</b>	MPEG-2, H.264
<b>Input Rate</b>	Max.120Mbit/s
<b>Aspect Ratio</b>	4:3, 16:9, Letter Box
<b>Video Decoding</b>	MPEG-2, MP@ML, MPEG-4 part 10/H264
<b>Video Resolution</b>	720*480P/I, 720*576P/I, 1280*720p,1920*1080i, 1920*1080P
<b>Audio Decoding</b>	MPEG-1 layer I/II, MPEG-2 layer II, Dolby Digital
<b>Audio Mode</b>	Left / Right / Stereo/ Mono
<b>Sampling Rate</b>	32, 44.1 and 48KHz

<b>A/V &amp; DATA INPUT/OUTPUT</b>	
<b>TV-SCART</b>	Video CVBS/RGB output
	Audio L/R output
<b>RCA</b>	Video CVBS output
	Audio L/R output
<b>S/PDIF</b>	Coaxial Digital Audio or Dolby Digital Bit Stream Output
<b>RS-232C</b>	Transfer rate 115.2Kbps
	9 pin D-sub Type
<b>USB</b>	One USB 2.0 slot Compatible
<b>HDMI</b>	VER1.2
	Type A
<b>PHYSICAL SPECIFICATION</b>	
<b>Size[W*H*D]</b>	220mmX160mmX40mm
<b>Net Weight</b>	1.0KG
<b>Operation Temperature</b>	0°C ~+45°C
<b>Storage Temperature</b>	-10°C ~+70°C
<b>Storage Humidity</b>	5%~95% RH (Non-Condensing)

Specifications are subject to change without further notice.

The manufacturer does not assume any responsibility regarding any errors or mistakes in printing.

Please note that a new software may change the features of the receiver.

The manufacturer holds the rights of changes without any further notice.